

**SPAZZATRICE CON
BENNA DI RACCOLTA
COLLECTOR SWEEPER**



MANTA I



*Accessori per macchine movimento terra
Attachments for earth moving machinery*



SPAZZATRICE CON BENNA DI RACCOLTA COLLECTOR SWEEPER



Find other products

MANTA I



Caratteristiche Tecniche

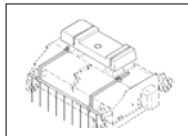
Spazzatrice con benna di raccolta completa di rotore flottante con spazzole in polipropilene alternate in acciaio, 3 o 4 ruote girevoli a 360° libere, **cilindro idraulico per il ribaltamento della benna**, tubazioni in gomma per l'alimentazione del circuito idraulico.

Technical specifications

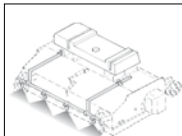
Collector sweeper complete by floating rotor with polypropylene and steel brushes, 3 or 4 slewing wheels 360° frees, **hydraulic cylinder for reversal picker of waste**, rubber pipes for hydraulic circuit' supply.

MODELLI MODELS		MANTA 1200 I	MANTA 1400 I	MANTA 1600 I	MANTA 1800 I	MANTA 2100 I	MANTA 2400 I
Larghezza totale Total width	mm	1400	1600	1800	2000	2300	2600
Larghezza di lavoro Working width	mm	1200	1400	1600	1800	2100	2400
Peso Weight	kg	400	430	470	530	590	640
Spazzola Brush	mm/ nr	560/28	560/30	560/36	560/38	560/45	560/52
Capacità della benna Bucket capacity	lt	180	230	290	350	410	470
Portata massima Maximum oil flow	l/1'	90	90	90	90	90	100
Pressione massima Maximum pressure	bar	215	215	215	215	215	245

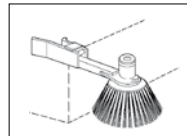
Accessori - Options



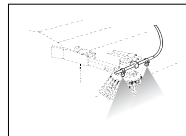
Kit innaffiante per caduta con serbatoio da litri 100
Falling water kit with 100 lts tank



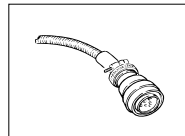
Kit innaffiante a pressione con serbatoio da litri 100, pompa elettrica, ugelli per nebulizzare l'acqua
Pressure water kit with 100 lts tank, electric pump and water's sprays



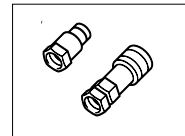
Spazzola pulizia laterale Ø 580 mm con motore idraulico indipendente
Side brush Ø 580 mm with independent hydraulic engine (left, right or on both sides)



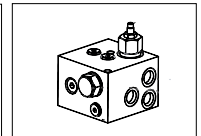
Kit tubazioni con spruzzatori per spazzola laterale
Pipe kit with sprays for side brush



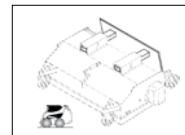
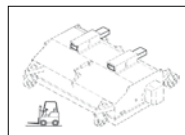
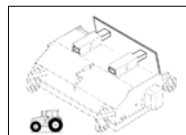
Connettore a 8 o 14 poli
Connector with 8 or 14 poles



Kit attacchi rapidi 3/4" S.F.
Quick couplers kit 3/4" S.F.



Valvola di regolazione portata e pressione
Pressure and oil flow regulation valve



Sistema di accoppiamento flottante con aggancio rapido
Floating connection system with quick couplers

U.EMME s.r.l.
Via dell'Artigianato 19 - 47015 Modigliana (FC)
Tel. 0546941725 - Fax 0546940050
E-mail: info@uemme.com
www.uemme.com



Dati, descrizioni ed illustrazioni del presente prospetto sono forniti a titolo indicativo e non impegnativo. U.EMME si riserva il diritto di apportare qualunque modifica senza preavviso.

The details, descriptions and illustrations contained herein are intended to serve as guideline only and cannot be binding on the manufactures. U.EMME reserve the right to make any changes deemed necessary, without notice.

ACCESSORI PER MACCHINE MOVIMENTO TERRA | ATTACHMENTS FOR EARTH MOVING MACHINERY

